

FireLite[®] NT

FIRE-RATED, SAFETY-RATED GLASS CERAMIC MADE WITH 3M™ SCOTCHSHIELD™ ULTRA FILM

FireLite[®] NT is a 3/16" (5 mm) thick fire-rated and impact safety-rated glazing material, composed of FireLite and surface-applied 3M™ Scotchshield™ Ultra Film. It is listed for use in doors, sidelites, transoms and borrowed lites with fire rating requirements ranging from 20 minutes to 3 hours.

FEATURES

- Fire-rated for up to 3 hours **with hose stream test**
- Impact safety-rated – meets ANSI Z97.1 and CPSC 16 CFR1201 (Cat. I and II)
- Glass ceramic with high performance surface-applied 3M™ Scotchshield™ Ultra Film
- Clear and wireless
- Fits in Designer Series Fireframes[®] from TGP, or standard fire-rated frames
- Withstands thermal shock
- Fire and impact ratings unaffected by which way film faces in interior applications
- FireLite side may be lightly sandblasted or etched without affecting the fire rating
- Passes positive pressure test standards UL 10C, UBC 7-2 and UBC 7-4
- 3-year limited warranty

Note: This product is not a barrier to radiant heat. This product does not meet test standards ASTM E-119 or UL 263. If your jurisdiction requires a "barrier to heat" product, please contact Technical Glass Products regarding Pilkington Pyrostop™

LISTINGS

Listed and labeled by Underwriters Laboratories, Inc.[®] and Underwriters' Laboratories of Canada. Test report number for labeled fire-rated assemblies is: UL File No. R13377. Tested in accordance with UL 9, UL 10B, UL 10C, ASTM E2074, ASTM E2010, CSFM 43.7, NFPA 252, NFPA, 257, UBC 43.2, UBC 43.4, UBC 7-2, UBC 7-4, CAN4 S-104 and CAN4 S-106.

Rating	Assembly	Max. Exposed Area (Sq. In./Sq. Ft.)	Max. Width Of Exposed Glazing (In.)	or Max. Height Of Exposed Glazing (In.)	Stop Height
20 to 60 min.	Doors (non-temp rise)				
	HMS or wood*	3,204/22.25	36	89	5/8"
	Fireframes D.S.	3,204/22.25	36	89	3/4"
	Doors (temp rise)	100/0.69	12	33	5/8"
	Other than doors				
	HMS or wood	3,325/23.09	95	95	5/8"
90 min.	Doors (non-temp rise)				
	HMS or wood	2,034/14.13	36	56-1/2	5/8"
	Fireframes D.S.	2,034/14.13	36	56-1/2	3/4"
	Doors (temp rise)	100/0.69	12	33	1/2"
	Other than doors				
	HMS	2,627/18.24	56-1/2	56-1/2	5/8"
3 hour	Doors	100/0.69	12	33	1/2"
	Fireframes D.S.	2,627/18.24	56-1/2	56-1/2	3/4"

* HMS indicates hollow metal steel framing. Fireframes D.S. indicates **Designer Series** narrow profile framing available from TGP. For wood frames, check with manufacturer for maximum tested glass sizes.



1-800-426-0279
Fax: 1-800-451-9857
Email: sales@fireglass.com
www.fireglass.com

Note: Individual lite sizes cannot exceed "Max. Exposed Area" shown above.

Surface Finish	Premium	Standard	Obscure
Max. Sheet Size	48" x 96"	48" x 96"	36" x 96"

This information is intended for general reference only. For current listing details, please call Technical Glass Products.

Fire-Rated

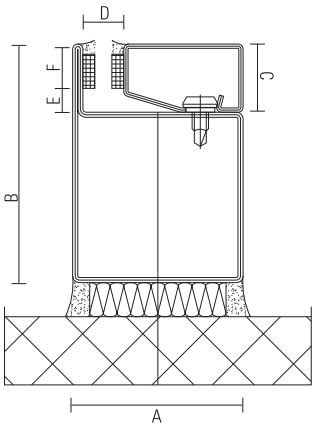


Hose Stream Tested



Impact-Rated





Detail based on use of Fireframes Designer Series narrow profile framing

Glazing Thickness: 3/16" ~ 1"

- a. Frame width: 2"
b. Frame height: 2-3/4"
c. Stop height: 3/4"
d. Pocket width: 1/2" ~ 1-1/4"
e. Edge clearance: 1/4"
f. Bite: 1/2"

SPECIFICATIONS

All glass designated on the drawings as fire-rated and impact safety-rated shall be 3/16" (5 mm) thick FireLite NT supplied by Technical Glass Products.

Complete 3-part CSI format specifications are available online at www.fireglass.com, or by calling 1-800-426-0279.

GENERAL CHARACTERISTICS

- Thickness: 3/16" (5 mm) overall
Weight: 2.4 lbs./sq. ft.
Approx. Visible Transmission: 88%
Approx. Visible Reflection: 9%
Hardness (Vicker's Scale): 700
Fire Rating: 20 minutes to 3 hours
Impact Safety Rating: Meets ANSI Z97.1 and CPSC 16CFR1201 (Cat. I and II)

Figures are for Premium (polished) FireLite NT and are approximate. Figures will differ slightly for Standard (unpolished) and Obscure (patterned) surface finishes.

LABELING

Each piece of FireLite NT shall be permanently labeled with the FireLite NT logo, UL logo and fire rating.

INSTALLATION

FireLite NT shall be glazed into the appropriate fire-rated framing with an approved glazing compound (pure silicone, closed cell PVC tape or DAP 33 putty) as supplied by the installer.

Inspect each piece of FireLite NT immediately before installation and eliminate any with observable edge damage or face imperfections.

STORAGE & HANDLING

FireLite NT must be handled with care during transportation, storage, inspection and installation. Store in a dry place.

TGP offers a complete family of products for all your fire-rated glazing needs, ranging from 20 minute to 3 hour applications.

Table with 2 columns: Product Name and Description. Includes items like Fireglass 20, FireLite, FireLite NT, FireLite Plus, FireLite IGU, Pilkington Pyrodur, Pilkington Pyrostop, Pilkington Pyroshield Plus, and Fireframes.



1-800-426-0279
Fax: 1-800-451-9857
Email: sales@fireglass.com
www.fireglass.com

FireLite and FireLite Plus are registered trademarks of Nippon Electric Glass Co., Ltd. Pyrodur, Pyroshield and Pyrostop are registered trademarks of Pilkington. Technical Glass Products, Fireglass and Fireframes are registered trademarks of Technical Glass Products.